



Ubisense Installation Guide for SmartSpace + DIMENSION4 + Series7000 + ACS with Site connector

Version 3.5.2

Part Number: SS/D4/S7K/ACS/SC_INS_3.5.2_EN

Copyright © 2020, Ubisense Limited 2014 - 2020. All Rights Reserved. You may not reproduce this document in whole or in part without permission in writing from Ubisense at the following address:

Ubisense Limited
St Andrew's House
St Andrew's Road
Cambridge CB4 1DL
United Kingdom

Tel: +44 (0)1223 535170

WWW: <https://www.ubisense.com>

All contents of this document are subject to change without notice and do not represent a commitment on the part of Ubisense. Reasonable effort is made to ensure the accuracy of the information contained in the document. However, due to on-going product improvements and revisions, Ubisense and its subsidiaries do not warrant the accuracy of this information and cannot accept responsibility for errors or omissions that may be contained in this document.

Information in this document is provided in connection with Ubisense products. No license, express or implied to any intellectual property rights is granted by this document.

Ubisense encourages all users of its products to procure all necessary intellectual property licenses required to implement any concepts or applications and does not condone or encourage any intellectual property infringement and disclaims any responsibility related thereto. These intellectual property licenses may differ from country to country and it is the responsibility of those who develop the concepts or applications to be aware of and comply with different national license requirements.

Windows® is a registered trademark of Microsoft Corporation in the United States and/or other countries. The other names of actual companies and products mentioned herein are the trademarks of their respective owners.

Contents

- Ubisense Installation Guide for SmartSpace + DIMENSION4 + Series7000 + ACS with Site connector** **1**
- The Ubisense installation process** **2**
- Requirements** **4**
 - Server Hardware Requirements 4
 - Server Software Requirements 4
 - Database Server for Reporting or RDBMS map 5
 - SQL Server 5
 - Oracle 5
 - Web Server Requirements 6
 - Supported Browsers 6
 - Additional Requirements for Windows Installations 7
 - Additional Requirements for Linux Installations 7
 - Platform user 7
 - Operations group 8
 - Windows client machine 8
 - Additional Requirements for ACS 8
- Unzipping Software to a Distribution Directory** **9**
- Installing Ubisense Software on Windows** **10**
 - Installing the Server Software 10
 - Starting the Server Software 11
- Installing Ubisense Software on Linux** **13**
 - Installing the Server Software 13
 - Starting the Server Software 13
 - Service security and Authentication using Cached Service Credentials on Linux 21
 - Configuration Parameters 22
 - Warnings and Errors 22
 - Platform Dataset 22

Configuring Operations Permissions	22
Backing up your Dataset	23
Installing Licenses on Windows	24
Installing Licenses on Linux	25
Installing Admin Machines on Windows	26
Installing Admin Machines on Linux	28
Installing Client Machines on Windows	29
Managing applications	29
Managing tools and documents	30
Installing Client Machines on Linux	31
Installing SmartSpace Web on Windows	32
Enable Internet Information Services (IIS) on Windows 2016	32
Install the Windows .NET Core Runtime and Hosting Bundle	32
Install the Website and/or REST API	32
Modify the website configuration files if required	34
Errors	37
Security Configuration for SmartSpace Web with Security Manager	38
Installing SmartSpace Web on Linux	39
Linux Requirements for SmartSpace Web	39
Server Configuration	39
Authentication Options	40
Configuration Files	40
Deploy the Platform Services	42
Configure Apache2 Reverse Proxy	44
Advanced Configuration	47
Security Configuration for SmartSpace Web with Security Manager	49
Installing DIMENSION4	50
Installing DIMENSION4 Features	50
Downloading DIMENSION4 programs to client machines (Windows)	50
Managing applications	50

Managing tools and documents	51
Downloading DIMENSION4 programs to client machines (Linux)	51
Installing the DIMENSION4 Series 7000 Coexistence Packages	53
Installing DIMENSION4 coexistence with Series 7000 Features	53
Installing Series 7000	54
Installing Series 7000 Features	54
Downloading Series 7000 programs to client machines (Windows)	54
Managing applications	54
Managing tools and documents	55
Downloading Series 7000 programs to client machines (Linux)	56
Installing ACS	57
Installing ACS Features	57
Downloading ACS programs to client machines (Windows)	58
Managing applications	58
Managing tools and documents	58
Adding Text Translations to the Dataset	60
Customized Labels in the Product Tag Association Tool	60
Adding Audit Translations to the Dataset	60
Running the ACS Client Software	61
Settings in Ubisense Security Manager	61
Audit Messages for Automated Processes	61
Installing Site connector	62
Installing Site connector server	62
Installing Site connector server on Windows	62
Installing Site connector server on Linux	63
Installing Site connector clients	63
Installing the Site connector Client on Windows	63
Installing the Site connector Client for Servers on Windows	64
Installing the Site connector Client on Linux	65

Ubisense Installation Guide for SmartSpace + DIMENSION4 + Series7000 + ACS with Site connector

A SmartSpace + DIMENSION4 + Series 7000 + ACS installation includes the core Ubisense software and any licensed SmartSpace features alongside DIMENSION4's tag location capabilities and support for Ubisense Series 7000 sensors and the ACS software for location-enabled products and devices in assembly environments.

SmartSpace + DIMENSION4 + Series 7000 + ACS requires additional services to enable Series 7000 and DIMENSION4 sensors to operate in the same installation.

Site connector connects Ubisense platforms on separate networks using TCP/IP.

These instructions guide you through installing Ubisense SmartSpace software. They include a description of the organization and installation of Ubisense software across server, admin and client machines; prerequisites for installation; and the stages of the installation process.

SmartSpace installations can range in size from a single computer running all SmartSpace software, for example for evaluation purposes, to several servers with associated admin and client machines in a large industrial setting. SmartSpace can be installed and run on Windows and Linux computers and an installation may include a mix of these, for example with Linux servers and Windows client machines, and the instructions that follow include information for both Linux and Windows.



For Windows computers, installation files (.msi) are supplied. However, because of the variations between Linux distributions and between package management systems used by different Enterprise configurations, Ubisense do not provide an automatic installation method for Linux. Instead the instructions describe the necessary state of a Ubisense platform installation on Linux, prerequisites for the installation, the layout and permissions expected, and example scripts.

The next section provides an overview of the installation process and subsequent sections take you through installing SmartSpace + DIMENSION4 + Series7000 + ACS with Site connector step by step.

The Ubisense installation process

Ubisense requires software to be installed on three types of machine: *server*, *admin* and *client*.

- Servers run the core and controller software, and the Ubisense platform from which you can start and stop the Ubisense servers. Ubisense servers can run on either Windows or Linux (see [Requirements](#) for supported versions).
- The software installed on an admin machine enables you to manage the installation and deployment of SmartSpace features across your entire SmartSpace installation.
- On client machines, you will find the SmartSpace applications available to users according to the SmartSpace features you have licensed.

Depending on your requirements, you might install all three SmartSpace machines on a single computer or you might spread the installation over a number of machines.

The following are the steps required to set up a new installation:

Install the Ubisense Software

1. Install the Ubisense server software onto the relevant machine(s).
2. Start the core server and service controllers.
3. Install licenses.
4. Install the Ubisense admin software onto the relevant machines.
5. Install and deploy licensed SmartSpace features.
6. Install the Ubisense client software onto the relevant machines.
7. Download SmartSpace software to client machines.

Depending on the features you have licensed, users may access SmartSpace via a web interface, for example to view Web maps. In this case additional steps are required to set up a web server. You do not need to install additional software for end users to access the browser-based features.

Install DIMENSION4

After you have installed the core software, you can install DIMENSION4 by installing and deploying additional services. Follow these steps to install DIMENSION4:

1. Install and deploy DIMENSION4 services.
2. Download the DIMENSION4 software to client machines.

Install D4 Series 7000 Coexistence Packages

After you have installed the core software, you can install support for D4 Series 7000 Coexistence Packages by installing and deploying additional services. Follow these steps to install D4 Series 7000 Coexistence Packages:

1. Install and deploy D4 Series 7000 Coexistence Packages.

Install Series 7000 Support

After you have installed the core software, you can install support for Series 7000 by installing and deploying additional services. Follow these steps to install Series 7000:

1. Install and deploy Series 7000 services.
2. Download the Series 7000 software to client machines.

Install ACS

After you have installed the core software, you can install ACS by installing and deploying additional services. Follow these steps to install ACS:

1. Install and deploy ACS services.
2. Download the ACS software to client machines.
3. Install ACS translations.
4. Run the ACS clients.
5. Configure audit messages for automated processes.

Install Site connector

After you have installed the core software, you can install Site connector by installing and deploying additional services. Follow these steps to install Site connector:

1. Install the Site Connector for Servers service.
2. Install the Site Connector Client or the Site Connector Client for Servers services.

Requirements

This section describes the hardware and software prerequisites for a SmartSpace + DIMENSION4 + Series7000 + ACS with Site connector installation.

Server Hardware Requirements

Exact requirements for server hardware will depend on such things as the number of sensors and tags in your installation or the number of users querying any browser-based applications you have licensed. Contact Ubisense for further guidance on the specific requirements for your installation.

The following is an illustration of an installation with two servers running DIMENSION4 and SmartSpace with the Visibility component.

Feature	Server 1 (DIMENSION4 + SmartSpace core)	Server 2 (Windows server server running IIS)
Processor	Quad-core Intel® Xeon® processors 3400 series	16-core Intel® Xeon® processors
Memory	8 GB	8 GB
Ethernet Interface	Gigabit Network Adapter	Gigabit Network Adapter
Virtualization	For information about virtualization, contact Ubisense Support.	For information about virtualization, contact Ubisense Support.

Server Software Requirements

Ubisense supports the following operating systems:

Windows

- Windows Server 2012 R2 (Windows Server 2012 is also supported, but customers should upgrade to R2, per Microsoft advice)
- Windows Server 2016
- Windows Server 2018 R2

Additionally, for client machines (and for proofs of concept, with the agreement of Ubisense Support):

- Windows 7.0 Professional
- Windows 8.1 Professional (Windows 8.0 has been withdrawn by Microsoft and customers should upgrade to 8.1 or Windows 10)
- Windows 10 Enterprise

Linux

- SUSE Linux Enterprise Server (SLES) 11 SP4
- SUSE Linux Enterprise Server (SLES) 12 SP2
- Red Hat® Enterprise Linux® (RHEL) 7.0
- Red Hat® Enterprise Linux® (RHEL) 7.3

If you are installing a web server for use with the Visibility component, see the additional considerations discussed in [Linux Requirements for SmartSpace Web](#).

Database Server for Reporting or RDBMS map

Either of the following are required *only* if the Reporting component or the RDBMS map feature is licensed:

SQL Server

Database versions: 2008 R2 or higher.

- Windows servers using ODBC and SQL Server Native Client library
- Linux servers using Microsoft ODBC Driver 17 for SQL Server

Oracle

Database versions: 11G R2 or higher.

- Windows servers using Oracle Instant Client 12.1 library
- Linux servers using Oracle Instant Client 12.2 library

For information on configuring servers for use with the Reporting component, see SmartSpace Reporting on the Ubisense Documentation Portal.

For information on configuring servers for use with the RDBMS map feature, see RDBMS map configuration on the Ubisense Documentation Portal.

Web Server Requirements

If you have also licensed any of the following SmartSpace features which provide web-based functionality, you must also configure a web server:

- Web maps
- Web forms
- HMIs
- Operations web interface
- Web reports

Additionally, if you have licensed the feature, you must configure a separate web server for the Application REST API.

From release 3.4, SmartSpace Web and the SmartSpace REST API can be deployed on either Windows or Linux web servers.

Under Windows, the websites are installed using Windows Installer, and are controlled and hosted under IIS.

For Windows installations, you will also need to download the 2.2.x ASP.NET Core/.NET Core: Runtime & Hosting Bundle from Microsoft (described in [Installing SmartSpace Web on Windows](#)).

On Linux, the websites are controlled by the Ubisense platform controller, as services, and by default require a reverse proxy (such as Apache2) to make them available to the network (see [Installing SmartSpace Web on Linux](#)).

If you are using unicast cluster support in your Ubisense platform, see also the *SmartSpace Unicast Cluster Setup Guide* on the Ubisense Documentation Portal for additional configuration requirements.

Supported Browsers

Supported browsers for use with SmartSpace's web-enabled features are recent versions of:

- Internet Explorer 11
- Microsoft Edge
- Chrome

- Chrome for Android
- iOS Safari

Additionally, recent versions of the following browsers work but are not explicitly supported:

- Firefox
- Opera
- Safari

Additional Requirements for Windows Installations

You may need to install Microsoft® .NET Framework 4.7.1 if this was not included in your Windows software.

Additional Requirements for Linux Installations

The following are requirements for Linux computers onto which server or admin machines are to be installed:

- Platform executables require a 32-bit libstdc++ compatible with libstdc++.so.6.0.8, which means any libstdc++.so.6.0.X where $X \geq 8$.
- The executables also require the 32-bit (i386) /lib/ld-linux.so.2.
- The firewall should be disabled on the server.
- In order to work around kernel bind(0) behavior, the local dynamicport range should be changed.
 - **Either:** place the following in an init script such as /etc/rc.d/rc.local: `sysctl -w net.ipv4.ip_local_port_range=32768 49978`
 - **Or:** place the following in /etc/sysctl.conf: `net.ipv4.ip_local_port_range=32768 49978`

After reboot or applying `sysctl -p`, the property `net.ipv4.ip_local_port_range` can be checked with `sysctl -a`.

Platform user

A user should be configured to execute platform services. We will refer to this as the *platform user*.

Requirements

Operations group

A group should be configured for operations. Users in this group should be able to perform production operations, including starting and stopping the platform services, making and restoring backups, and performing other diagnostic and support roles, such as license management and platform service upgrades. The platform user might be in the operations group.

Windows client machine

In order to run any of the Windows-based configuration applications (SmartSpace Config, Location System Config, Location Engine Configuration, ACS GUI), you will need access to a Windows computer to install a client machine.

Additional Requirements for ACS

SharpDX is used to access the DirectX API under the .Net platform. SharpDX is using the DirectX library d3dx9_43.dll. If this is not present on your client PC, you may have to update your DirectX (*not* Managed DirectX).

Search for the latest version of DirectX on the Microsoft website:

<http://www.microsoft.com/download/en/search.aspx?q=directx>

Unzipping Software to a Distribution Directory

The SmartSpace software is supplied as a zipfile with the name SmartSpace followed by numbers indicating the version of the software, for example **SmartSpace_3_3_669.zip**. Before you install SmartSpace, you need to unzip this file into a *distribution directory* accessible to the machines on which you will be installing the software.

Installing Ubisense Software on Windows

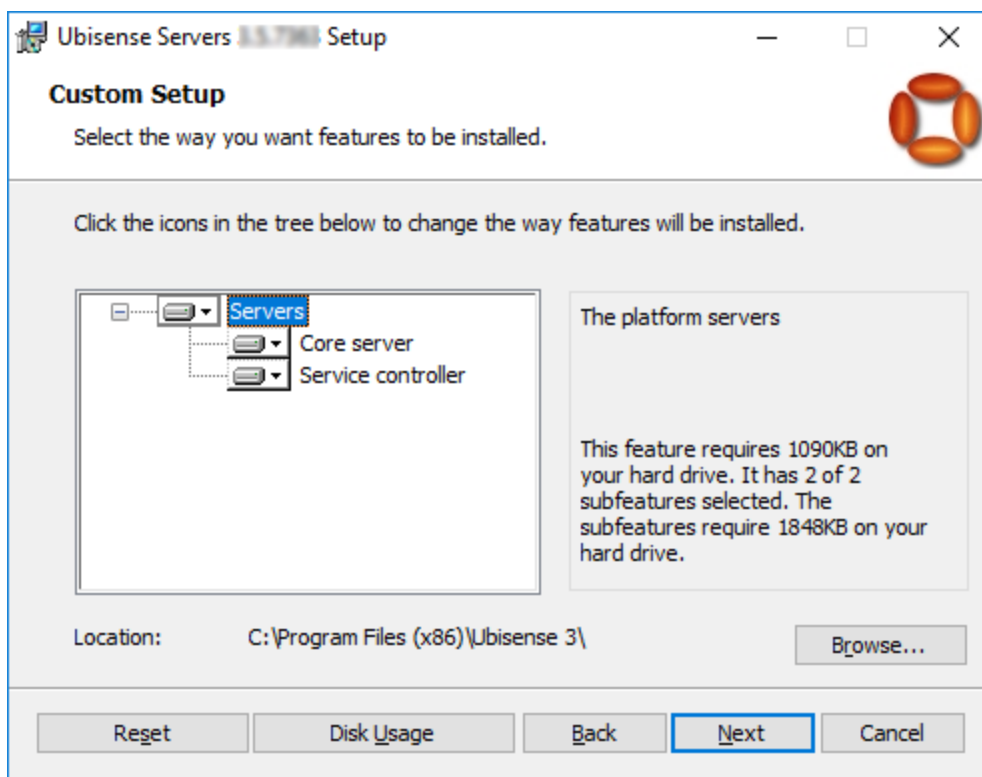
Installing the Server Software

On each machine you want to use as a server, you must install the Ubisense server software.

During the installation process, for each server machine you can choose to install either the core server or service controller or both. If you intend to run SmartSpace on a single server, you need to install both the core server and service controller on that machine. For an installation with more than one server, you need to run the core server on one machine only and the service controller on the rest, and you can install the components accordingly.

To install the server software:

1. Go to the **servers\windows** directory of your SmartSpace distribution directory.
2. Double-click the **UbisenseServers.msi** file and the Ubisense Servers Setup wizard appears.
3. Click **Next** to display the Custom Setup dialog.



4. Choose the components to install.

By default, all features are selected. Choose whether to install or exclude items using the dropdowns beside their names. **Reset** returns you to the default selection.

5. Choose the location for the software.

You can accept the default **C:\Program Files (x86)\Ubisense 3** or click **Browse** to select another destination.

6. Click **Next** and click **Install**.

7. When the installation is complete, click **Finish** to close the Ubisense Servers Setup wizard.

You have now installed Ubisense Platform Control and the Ubisense server software onto your computer. Using Platform Control to start the server software is described in the next section.

Starting the Server Software

After you have installed the server software, you need to start the core server and service controller(s).

To start the server software:

1. From a SmartSpace server, run Platform Control.
2. For a new installation, you need to choose a location for your dataset:

In the **Properties** section, browse to the required location (creating a new folder, if needed) and click **OK (new)**.

3. Start the core server and service controller by:

- a. Selecting **UbisenseCoreServer 3** and then clicking **Start**.
- b. Selecting **UbisenseServiceController 3** and then clicking **Start**.

See the information below for information on starting services with a single server or multiple servers.

You are offered only the server components installed on the machine (see [Installing the Server Software](#)).

The status of each service changes to **to be started**.

4. Click **Apply**. The status of each service changes to **running**.

Running SmartSpace on a Single Server

If you want to configure SmartSpace to run on a single server, run Platform Control on the

Installing Ubisense Software on Windows

server and:

- In Services, ensure you have started *both* the core server and the service controller.
- *Don't* select **run in standalone mode** if you want access to you network (and to sensors).

Running SmartSpace on Multiple Servers

If you want to configure SmartSpace to run on more than one server, you must:

- Assign one server to be the core server and *on this machine only* run Platform Control and in Services start the core server.
- On all other server machines, run Platform Control and in Services start the service controller.
- *Don't* select **run in standalone mode** if you want access to you network (and to sensors).

Backing up your Dataset

After you have set up your SmartSpace installation, ensure that you back up your dataset occasionally, so that you can recover your data. To take a backup, use the **Backup Dataset** option, and then compress the folder.

You can also use the **ubisense_backup.exe** command-line tool from the **tools\windows** folder of your distribution directory to backup your dataset.

Installing Ubisense Software on Linux

Installing the Server Software

For Linux servers, there are two executables: **ubisense_core_server** and **ubisense_local_control**. You can find them in the following locations in the distribution directory:

```
servers/linux/ubisense_core_server
servers/linux/ubisense_local_control
```

If you want to run SmartSpace on a single server, copy both of these files to that machine.

If you want to run SmartSpace on several servers, copy **ubisense_core_server** onto one server machine only and **ubisense_local_control** onto the remainder of the machines.

Starting the Server Software

On each server machine, one or both of the **ubisense_core_server** and **ubisense_local_control** services should be executed on startup, depending on whether the machine is to act as a core server, a service controller, or both. These services should be executable by the platform user, and no other user, to avoid accidental execution. Because of the variations between Linux distributions, Ubisense do not ship standard startup scripts for these executables, but examples are provided:

Sample init.d scripts for core server and service controller

Core Server

```
#!/bin/bash
#
# Init file for Ubisense core platform server
#
# chkconfig: 345 98 02
# description: Ubisense core platform for linux
# processname: ubisense_core_server
# config: /etc/ubisense.conf

# source function library
```

Installing Ubisense Software on Linux

```
if [ -e /etc/rc.d/init.d/functions ]
then
    . /etc/rc.d/init.d/functions
else
    # steal status() from /etc/rc.d/init.d/functions on a RH box
    status() {
        local base=${1##*/}
        local pid

        # Test syntax.
        if [ "$#" = 0 ] ; then
            echo $"Usage: status {program}"
            return 1
        fi

        # First try "pidof"
        pid=`pidof -o $$ -o $PPID -o %PPID -x $1 || \
            pidof -o $$ -o $PPID -o %PPID -x ${base}`
        if [ -n "$pid" ]; then
            echo $"${base} (pid $pid) is running..."
            return 0
        fi

        # Next try "/var/run/*.pid" files
        if [ -f /var/run/${base}.pid ] ; then
            read pid < /var/run/${base}.pid
            if [ -n "$pid" ]; then
                echo $"${base} dead but pid file exists"
                return 1
            fi
        fi

        # See if /var/lock/subsys/${base} exists
        if [ -f /var/lock/subsys/${base} ]; then
            echo $"${base} dead but subsys locked"
            return 2
        fi
        echo $"${base} is stopped"
        return 3
    }
fi
```

```

# pull in sysconfig settings
[ -f /etc/ubisense.conf ] && . /etc/ubisense.conf

PLATFORM_USER=${PLATFORM_USER:-platform}
UBISENSE_CORE_SERVER=/home/platform/bin/i586_linux_2.6/ubisense_core_server
export UCONFIG=/etc/ubisense/platform.conf

RETVAL=0
prog="ubisense"

start()
{
    echo -n "Starting ubisense_core_server:"
    if [ -e /etc/rc.d/init.d/functions ]
    then
        daemon --check ubisense_core_server --user=platform ${UBISENSE_CORE_SERVER} -d
    else
        startproc -u platform ${UBISENSE_CORE_SERVER} -d
    fi
    touch /var/lock/subsys/ubisense_core_server
    echo
}

stop()
{
    echo -n "Stopping ubisense_core_server:"
    if [ -e /etc/rc.d/init.d/functions ]
    then
        killproc ubisense_core_server
    else
        killproc ${UBISENSE_CORE_SERVER}
    fi
    rm -f /var/lock/subsys/ubisense_core_server
    echo
}

case "$1" in
    start)
        start
        ;;
    stop)
        stop
        ;;
    restart)
        stop
        start
        ;;
    status)
        status ubisense_core_server
        ;;
    *)
        echo $"Usage: $0 {start|stop|restart|status}"

```

Installing Ubisense Software on Linux

```
RETVAL=1
esac
exit $RETVAL
```

Local Controller

Installing Ubisense Software on Linux

```
#!/bin/bash
#
# Init file for Ubisense local controller
#
# chkconfig: 345 99 01
# description: Ubisense local controller for linux
# processname: ubisense_local_control
# config: /etc/ubisense.conf

# source function library
if [ -e /etc/rc.d/init.d/functions ]
then
    . /etc/rc.d/init.d/functions
else
    # steal status() from /etc/rc.d/init.d/functions on a RH box
    status() {
        local base=${1##*/}
        local pid

        # Test syntax.
        if [ "$#" = 0 ] ; then
            echo $"Usage: status {program}"
            return 1
        fi

        # First try "pidof"
        pid=`pidof -o $$ -o $PPID -o %PPID -x $1 || \
            pidof -o $$ -o $PPID -o %PPID -x ${base}`
        if [ -n "$pid" ]; then
            echo $"${base} (pid $pid) is running..."
            return 0
        fi

        # Next try "/var/run/*.pid" files
        if [ -f /var/run/${base}.pid ] ; then
            read pid < /var/run/${base}.pid
            if [ -n "$pid" ]; then
                echo $"${base} dead but pid file exists"
                return 1
            fi
        fi

        # See if /var/lock/subsys/${base} exists
        if [ -f /var/lock/subsys/${base} ]; then
            echo $"${base} dead but subsys locked"
            return 2
        fi
        echo $"${base} is stopped"
        return 3
    }
fi

# pull in sysconfig settings
[ -f /etc/ubisense.conf ] && . /etc/ubisense.conf
```



```

PLATFORM_USER=${PLATFORM_USER:-platform}
UBISENSE_LOCAL_CONTROL=/home/platform/bin/i586_linux_2.6/ubisense_local_control
export UCONFIG=/etc/ubisense/platform.conf

RETVAL=0
prog="ubisense"

start()
{
    echo -n "Starting ubisense_local_control:"
    if [ -e /etc/rc.d/init.d/functions ]
    then
        daemon --check ubisense_local_control --user=platform ${UBISENSE_LOCAL_CONTROL} -d
    else
        startproc -u platform ${UBISENSE_LOCAL_CONTROL} -d
    fi
    touch /var/lock/subsys/ubisense_local_control
    echo
}

stop()
{
    echo -n "Stopping ubisense_local_control:"
    if [ -e /etc/rc.d/init.d/functions ]
    then
        killproc ubisense_local_control
    else
        killproc ${UBISENSE_LOCAL_CONTROL}
    fi
    rm -f /var/lock/subsys/ubisense_local_control
    echo
}

case "$1" in
    start)
        start
        ;;
    stop)
        stop
        ;;
    restart)
        stop
        start
        ;;
    status)
        status ubisense_local_control
        ;;
    *)
        echo $"Usage: $0 {start|stop|restart|status}"
        RETVAL=1
esac
exit $RETVAL

```

Sample systemd scripts for a RedHat Linux machine

The following example illustrates the use of systemd scripts for SmartSpace with the core and controller executables on a single Red Hat® Linux machine.



The instructions assume the core server and local controller executables (**ubisense_core_server** and **ubisense_local_control**) are in **/home/platform/bin/i586_linux**. If this is not the case, the service files (**ubisense_core_server.service** and **ubisense_local_control.service**) will have to be updated to reflect the location of the executable.

1. Add a target file **ubisense_service.target** in **/etc/systemd/system** containing the following:

```
[Unit]
Description=ubisense_service Target
Requires=multi-user.target
After=multi-user.target
AllowIsolate=yes
```

2. Run the following commands:

```
systemctl list-units --type service
systemctl daemon-reload
systemctl enable ubisense_service.target
systemctl isolate ubisense_service.target
ln -sf /etc/systemd/system/ubisense_service.target
/etc/systemd/system/default.target.wants/
```

3. Reboot the machine.
4. Check the status of the target using the command below to make sure the target is active and running:

```
systemctl list-units --type target
```

5. Add a service file **ubisense_core_server.service** in **/etc/systemd/system** containing the following:

```
[Unit]
Description=ubisense_core_server daemon
After=multi-user.target

[Service]
Type=forking
ExecStart=/home/platform/bin/i586_linux_2.6/ubisense_core_server -d

[Install]
WantedBy=ubisense_service.target
```

6. Add a service file **ubisense_local_control.service** in **/etc/systemd/system** containing the following:

```
[Unit]
Description=ubisense_local_control Daemon
After=multi-user.target

[Service]
Type=forking
ExecStart=/home/platform/bin/i586_linux_2.6/ubisense_local_control -d

[Install]
WantedBy=ubisense_service.target
```

7. Run the following commands:

```
systemctl daemon-reload
systemctl enable ubisense_local_control.service
systemctl enable ubisense_core_server.service
```

8. Reboot the machine.
9. To list the status of the services run the following command:

```
systemctl list-units --type service
```

Service security and Authentication using Cached Service Credentials on Linux

If you are running on a Linux server and configure a security policy in Service Manager that requires services to authenticate as a user, using **ubisense_cache_service_credentials**, then you must run the core and controller software with the **-d** flag (as shown in the examples above). Otherwise all services will still have a connected stdin/stdout and will attempt to prompt for credentials rather than reading the cached service credentials. See *Ubisense Security Manager* on the Ubisense Documentation Portal for information on configuring security.

Configuration Parameters

On Linux, the local configuration parameters for each core or controller machine are set, by default, in a configuration file. This file contains configuration parameters for the local platform processes, such as the location of the dataset and the networking mode. The default location expected by all platform executables is `/etc/ubisense/platform.conf`. If another location is to be used, then the environment variable **UCONFIG** should be defined: it is recommended this be set in startup scripts for all users on the server, but it certainly is required for the platform user and all users in the operations group. **UCONFIG** should be the full path of **platform.conf** in its desired location.

Configuration parameters are each on a single line in the file, with a colon and white-space separating the name of the parameter from the value. For example:

```
platform_dataset: /mnt/syn013/ubisense/production/dataset
no_multicast_mode: 1
server_unicast_addresses: 10.1.5.207,10.1.16.73
```

Warnings and Errors

Immediate warnings and errors when starting the two platform service executables are logged to the Linux syslog. On a typical Linux distribution they will either in `/var/log/messages` or `/var/log/warn`. If the services will not run, check these locations for more information.

Platform Dataset

The platform dataset is the directory where both the **ubisense_core_server** and **ubisense_local_control** services store platform state. Files in this directory comprise the configuration and ongoing operational state of the platform core, and of all the services configured to run on the local controller.

This directory should be owned by the platform user with full control. The operations group should also have read permission, to allow backup. Restore requires that the backup be copied here and all files set to have platform ownership. See [Configuring Operations Permissions](#).

The default platform dataset location is `/home/platform/dataset`. To set a different location, set **platform_dataset** in the **platform.conf** file.

Configuring Operations Permissions

If your Linux distribution supports sudo, then the operations group can be assigned permission to start and stop the platform services, and to change ownership of files to the platform user.

For example, the following lines might be added to the end of the `/etc/sudoers` file using `visudo`.

```
%operations ALL = (root) NOPASSWD: /sbin/service ubisense_core_server *, \  
/sbin/service ubisense_local_control *, \  
/bin/chown -R platform *, /bin/chown platform *
```

With this configuration, any user who is in the operations group will be able to run `sudo /sbin/service ...` to stop, start and get the status of just the platform services. They will also be able to restore platform dataset backups and set the ownership of the restored files back to the platform user.

Backing up your Dataset

After you have set up your SmartSpace installation, ensure that you back up your dataset occasionally, so that you can recover your data. Use the `ubisense_backup` command-line tool from the `tools\linux` folder of your distribution directory to backup your dataset.

Installing Licenses on Windows

SmartSpace feature licenses are supplied as a zipfile with the name **FeatureSetup.zip**. Before you install the licenses, you need to unzip this file into a directory accessible to a server machine from which **ubisense_core_server** will be executed.

To install SmartSpace licenses:

1. Go to the directory where you unzipped the licenses.
2. Double-click the **FeatureSetup.msi** file and the Ubisense Feature Licenses Setup Wizard appears.
3. Click **Next** and the Ubisense Feature Licenses Setup wizard appears.
4. By default all licenses are selected for installation to the default location **C:\Program Files (x86)\Ubisense 3\bin**.
 - Click on the directory tree of licenses, click on individual features and choose whether or not they are to be installed
 - Click **Reset** to return the licenses selection to its default setting
 - Click **Browse** to navigate to a different directory to install the licenses in
5. When you have selected the files and location you require, click **Next** and then click **Install**.
6. When installation is complete, click **Finish** to close the wizard.

Installing Licenses on Linux

License files must be placed on the server so that the platform can find them. The default location is in the directory `/etc/ubisense`. If a different location is required, then the `license_search_path` can be defined in `platform.conf` (see [Configuration Parameters](#) for information on the location of this file). Each program also searches for licenses in the same directory as its executable. Licenses should be readable by both the platform user and by the operations group.

Installing Admin Machines on Windows

To install the Ubisense software for an admin machine:

1. Go to the **clients\windows** directory of your SmartSpace distribution directory.
2. Double-click the **UbisenseServiceManager.msi** file and the Ubisense Service Manager Setup wizard appears.
3. Click **Next**.
4. Choose the Destination Folder for the software.
You can accept the default **C:\Program Files (x86)\Ubisense 3** or change to another destination.
5. Click **Next** and click **Install**.
6. When the installation is complete, click **Finish** to close the Ubisense Service Manager Setup wizard.

You have now installed Ubisense Service Manager onto your computer and you can now install and deploy SmartSpace features.



Before you can install and deploy features, you must install their licenses.

1. From an admin machine, run Service Manager 3.
2. Click on **INSTALL SERVICES**.
3. Specify the directory from which to install.

This is generally the **packages** folder in your SmartSpace distribution directory. Click **<Recently used directories** to select previous locations of features.

4. Select the features you want to install.

Use **Select all** or **Clear all** or click on individual features to indicate which items you want to install.

- All SmartSpace features are listed.
- All licensed features are selected by default.
- Unlicensed features are shown preceded by **[Unlicensed]**. You cannot select these features.

5. Click **Install**.

6. When installation is complete, click **Close** to close the Installing Services dialog.

You have now installed your SmartSpace features. In Ubisense Service Manager you can see which services have been deployed by the installed features. Click on **MANAGE SERVICES** to display the status of installed services and manage their deployment.

Installing Admin Machines on Linux

Administrative executables, used to configure and maintain the running state of the Ubisense platform, should be executable by the operations group.

Your distribution directory contains the following admin executables:

```
tools/linux/ubisense_backup  
tools/linux/ubisense_cache_service_credentials  
tools/linux/ubisense_configuration_client  
tools/linux/ubisense_file_downloader  
tools/linux/ubisense_installer  
tools/linux/ubisense_machine_id  
tools/linux/ubisense_multicast_test  
tools/linux/ubisense_proxyconfig_admin  
tools/linux/ubisense_restore_dataset  
tools/linux/ubisense_save_dataset  
tools/linux/ubisense_service_admin  
tools/linux/ubisense_service_ping  
tools/linux/ubisense_trace_receiver  
tools/linux/ubisense_transfer_config
```

Installing Client Machines on Windows

In Windows, the Ubisense Application Manager allows you to perform the following configuration activities on a client machine:

- Set up Start menu shortcuts for client applications
- Download various command-line tools and SmartSpace documents to a specified location on a client machine

To install the Ubisense software for a client machine:

1. Go to the **clients\windows** directory of your SmartSpace distribution directory.
2. Double-click the **UbisenseApplicationManager.msi** file and the Ubisense Application Manager Setup wizard appears.
3. Click **Next**.
4. Choose the Destination Folder for the software.
You can accept the default **C:\Program Files (x86)\Ubisense 3** or change to another destination.
5. Click **Next** and click **Install**.
6. When the installation is complete, click **Finish** to close the Ubisense Application Manager Updater Setup wizard.

You have now installed the Ubisense Application Manager and can now configure shortcuts to client applications and download documents and other files to your client machine.

Managing applications

To create shortcuts to SmartSpace applications:

1. Run the Ubisense Application Manager and click on **APPLICATIONS**.
2. Available applications are listed, with their version numbers and, where applicable, location on the Start menu.

Choose the applications you want to install.

- Double-click a single application
- Select several applications and press Enter

The following SmartSpace client program is available:

Installing Client Machines on Windows

- SmartSpace Config (the main SmartSpace configuration GUI)
3. Click **Create shortcuts for selected applications**.

Shortcuts are created in the Start menu in the locations indicated.

Managing tools and documents

To download SmartSpace command-line tools and documents to a selected directory:

1. Run the Ubisense Application Manager and click on **DOWNLOADABLES**.
Command-line tools and documents are listed in different categories. The tools and documents available to you depend on the features you have installed.
2. Choose the tools or documents you want to download.
3. Specify the directory to install the files in and click **Start download**.

The files are downloaded to the specified directory.



Whenever you upgrade your SmartSpace installation, you must follow the process described above to replace your existing tools and documents with upgraded versions.

Installing Client Machines on Linux

In order to avoid the use of incompatible versions of SmartSpace administrative and configuration tools, these tools are installed into the platform along with service upgrades. You can then download the current version of each tool onto your Linux client machine using the **ubisense_file_downloader**.

Run the tool with no arguments for help.

For example, to download *all* Linux tools currently available to the current directory, run:

```
> ubisense_file_downloader download --linux-only .
```

To force the overwriting of existing downloads, add `--force`.

Installing SmartSpace Web on Windows

If you have licensed SmartSpace features that are accessed in a browser, such as Web maps or Web forms, you need to set up a web server before installing these features.

To install and configure the Web Server:

1. Enable Internet Information Services.
2. Install the Windows .NET Core Runtime and Hosting Bundle.
3. Install the websites required.
4. Modify the website configuration files, if required.

Enable Internet Information Services (IIS) on Windows 2016

1. Open the Server Manager, click Add roles and features.
2. Click through to Server Roles, and select Web Server (IIS).
3. Click through to Web Server Role (IIS) and under Role Services, ensure that, in addition to the default features, you have enabled Security/Windows Authentication.
4. Click through to Confirm the installation.

Install the Windows .NET Core Runtime and Hosting Bundle

1. Download the 2.2.x ASP.NET Core/.NET Core: Runtime & Hosting Bundle from Microsoft: <https://dotnet.microsoft.com/download/dotnet-core/2.2>
2. Run the installer.
3. If .NET Core was not previously installed on the server, then a reboot is required for IIS to pick up the path to the .NET Core Runtime.

Install the Website and/or REST API

Follow these instructions to install the SmartSpace Web application.

When you install the SmartSpace Web application, the following components are created as part of the installation process:

Component	Description
Application Pool:	SmartSpace has its own application pool.
Website:	The entry point to SmartSpace via a browser.

To install the SmartSpace Web application:

1. Go to the **web\windows** directory of your SmartSpace distribution directory.
2. Double-click the **SmartSpaceWeb.msi**.
3. Enter a Website Name: this name will form part of the URL when accessing SmartSpace in a browser.
4. Choose the location for the software.
You can accept the default **C:\Program Files (x86)\Ubisense 3\SmartSpace** or click **Change** to select another destination.
5. Enter an Application Pool name.
6. Click **Next** and **Install**.

To install the SmartSpace Web API:

1. Go to the **web\windows** directory of your SmartSpace distribution directory.
2. Double-click the **SmartSpaceWebApi.msi**.
3. Enter a Website Name: this name will form part of the URL when accessing SmartSpace in a browser.
4. Choose the location for the software.
You can accept the default **C:\Program Files (x86)\Ubisense 3\WebApiCore** or click **Change** to select another destination.
5. Enter an Application Pool name.
6. Click **Next** and **Install**.

By default, the SmartSpace website can be accessed by navigating to <http://localhost/smartspace> and the REST API can be accessed by navigating to <http://localhost/smartspaceapi>.

Modify the website configuration files if required

Advanced configuration of the websites is done by creating and editing configuration files in the installation folders. By default, on Windows, these files are in:

- SmartSpace website: C:\Program Files (x86)\Ubisense 3\SmartSpace\Web\localsettings.json
- REST API website: C:\Program Files (x86)\Ubisense 3\WebApiCore\Web\localsettings.json

These files should be created if you wish to make advanced configurations, rather than modifying the installed defaults in **appsettings.json**. This is because **appsettings.json** can be overwritten on a software upgrade.

Header Authentication (SiteMinder)

The websites can read the authenticated user from a header passed to them by a proxy server, such as SiteMinder. To configure this, set "AuthOptions/UserHeader" to be the name of the header from which the logged in user is to be extracted.

```
{
  "AuthOptions": {
    "UserHeader": "SITEMINDER_USER"
  }
}
```



If you configure this option, it is vital that users cannot access the website except through the proxy server, because otherwise they could add their own header as part of the request and gain unauthorized access. Typically in this case you would configure IIS bindings to only listen on the loopback interface, or configure IP Address and Domain Restrictions. See Microsoft IIS documentation for details.

Switching to Forms Authentication

By default the Windows website installation uses Windows authentication for login. You can switch to forms authentication by configuring LDAP parameters and setting up "AuthOptions/UseCookiesOnWindows". For production or integration deployment, you will need an SSL certificate signed by a suitable root authority for your users. For development or test deployment, a test certificate can be used instead (e.g. generated locally using OpenSSL). If you configure forms authentication without SSL, it will not work.

In the following examples, the first example shows the configuration for an Active Directory server, whilst the second shows the configuration for an LDAP server that does not require a login for searching.

LDAP authentication with an Active Directory server

```
"LDAPAuth": {
```



```

    "Server": "adserver.company.com",
    "Port": "389",
    "User": "",
    "Password": "",
    "SearchStart": "dc=company,dc=com",
    "AccountId": "sAMAccountName"
  },

  "AuthOptions": {
    "UseCookiesOnWindows" : true,
    "ExpiryTimeSpan": "00:30",
    "SlidingExpiry": true
  }
}

```

LDAP authentication with no login for searching

```

"LDAPAuth": {
  "Server": "ldap.company.com",
  "Port": "389",
  "User": "",
  "Password": "",
  "SearchStart": "ou=people,dc=company,dc=com",
  "AccountId": "uid",
  "ObjectClass": "account"
},

"AuthOptions": {
  "UseCookiesOnWindows" : true,
  "ExpiryTimeSpan": "00:30",
  "SlidingExpiry": true
}
}

```

Note: The example given above works with the default OpenLDAP schema: other servers and schema might require different parameters.

How the LDAP validator behaves

The LDAP validator does the following:

1. If User option set, bind using this user/password.
2. If SearchStart is set, use the SearchStart, AccountId and ObjectClass to search for the DN of the entered user name.
3. Bind using the DN, if the search succeeded, or the entered user name. Use the entered password. If this bind succeeds, the user is authenticated successfully.

The validator reports what it is doing on the website trace (always on). for example:

Installing SmartSpace Web on Windows

```
[Tue Sep 24 14:23:03 2019, 127.0.0.1:42943] website: LDAPValidator: Is user valid marcin
[Tue Sep 24 14:23:03 2019, 127.0.0.1:42943] website: LDAPValidator: searching (&
(objectclass=nsAccount)(uid=marcin)) at base ou=people,dc=ubisense,dc=aws
[Tue Sep 24 14:23:03 2019, 127.0.0.1:42943] website: LDAPValidator: binding as user
uid=marcin,ou=People,dc=ubisense,dc=aws
```

Enabling Secure LDAP (LDAPS)

To enable secure LDAP (LDAPS) for the connection you must use port 636. By using this port, SSL/TLS is enabled for the connection to the LDAP server (all other port numbers use TCP).

```
"LDAPAuth": {
  "Server": "adserver.company.com",
  "Port": "636",
  "User": "",
  "Password": "",
  "SearchStart": "dc=company,dc=com",
  "AccountId": "sAMAccountName"
},

"AuthOptions": {
  "UseCookiesOnWindows" : true,
  "ExpiryTimeSpan": "00:30",
  "SlidingExpiry": true
}
}
```

Configuring the Authentication Timespan

The cookies authentication uses an expiry time of 30 minutes and a sliding timespan. This means that the authentication will expire 30 minutes after the user closes the website, but will continue to be refreshed while the user is still visiting the website.

You can disable this sliding expiry and set an absolute time after which login will need to be repeated. For example, to log out after three hours:

```
{
  "AuthOptions": {
    "ExpiryTimeSpan": "03:00",
    "SlidingExpiry": false
  }
}
```

Disable Hardened Headers

By default the website injects headers in each response for penetration security. These disable cross-site/cross-frame scripting, prevent content type sniffing, etc. If necessary, these headers can be disabled, and IIS configured manually to add appropriate headers instead.

```
{
  "SecurityOptions": {
    "HardenHeaders": false
  }
}
```

Enable Cross Origin Scripting

By default, no CORS headers are sent, so browsers will refuse to execute the API web methods from a page served from a different web server.

The option `AllowOrigins` in the `appsettings.json` file which overrides settings in `localsettings.json` enables cross origin scripting:

```
{
...
  "SecurityOptions": {
    "HardenHeaders": true,
    "AllowOrigins": [ "http://example.com", "https://*.mydomain.com" ]
  }
...
}
```

If `AllowOrigins` is set, and matches the origin of a request, the API will respond with suitable headers, for example:

```
Access-Control-Allow-Credentials: true
Access-Control-Allow-Headers: X-Requested-With
Access-Control-Allow-Methods: PUT
Access-Control-Allow-Origin: https://server.mydomain.com
Access-Control-Max-Age: 3600
```

The browser will now allow the request. Note that this allows the browser to cache the pre-flight `OPTIONS` responses for up to an hour, to reduce load on the API server. Thus changes to the allowed origins may not be picked up by browsers for an hour.

Errors

When the website is loaded, you may see 502.5 "ANCM Out-of-Process Startup Failure".

This is normally because the .NET Runtime could not be found. Make sure you restarted the server after installing the .NET Core Windows Server Hosting Bundle.

Also, make sure that you included the Security/Windows Authentication feature when deploying IIS, as this is required by the websites on Windows unless forms or header authentication is configured.

Security Configuration for SmartSpace Web with Security Manager

If you are using a non-trivial security manager configuration to force authentication for services (as is the case for ACS installations) then you must you must run the **ubisense_cache_service_credentials** tool on the web server host. This is because the **credentials.dat** file created by the tool (in the latest version) allows IIS_IUSRS as a reader. Without this, the web site code cannot read the credentials, and therefore cannot connect to the platform services it needs.

For a Windows server, you *must* use the version of the **ubisense_cache_service_credentials** tool from the 3.4 sp1 distribution or above.

Installing SmartSpace Web on Linux

If you have licensed SmartSpace features that are accessed in a browser, such as Web maps or Web forms, you need to set up a web server before installing these features.

In this section, we will describe configuring the websites using Apache2 as a reverse proxy. [Advanced configuration](#) options will then be covered later.

Linux Requirements for SmartSpace Web

We support recent enterprise Linux distributions, such as SUSE Linux Enterprise Server 11+ or Red Hat® Enterprise Linux® v7+.

The following instructions assume you are configuring a reverse proxy in Apache 2.4.23 or above. For Red Hat® Enterprise Linux® Apache 2.4.23 is only available for version 8+. Whilst configuring a reverse proxy on earlier versions of Red Hat® Enterprise Linux® is possible, instructions for this are beyond the scope of this guide.

The following packages must be installed on the server.

- Idap 2.4 libraries

For production or integration deployment, you will need an SSL certificate signed by a suitable root authority for your users. This certificate will be installed for Apache2. SSL (TLS) is required for Linux installation because the website uses forms-based authentication, and so must have transport level security configured. For development or test deployment, a test certificate can be used instead (e.g. generated locally using OpenSSL).

Server Configuration

Ensure the web server is connected to the platform, using multicast, unicast cluster (see Smart Space Using Unicast Cluster Setup Guide on the Ubisense Documentation Portal), or a site connector.

If you have not already done so, on the web server install the platform servers for Linux, configure a dataset directory, and start a local controller. The website will be deployed on this controller. See [Installing the Ubisense DIMENSION4 software on Linux](#).

If Microsoft .NET Core 2.2 is already installed on the server, the websites will use that runtime (follow the instructions for Linux on <https://dotnet.microsoft.com/>). If a server-wide installation of .NET Core is not provided, then an isolated local runtime will be used, shared only by the platform services that use it.

Authentication Options

There are two authentication methods supported in the web sites when deployed on Linux: Forms authentication, and Header authentication.

Forms authentication directs the user to a login page when they attempt to access a part of the web sites that requires authentication. This login page gathers the user and password, which are then validated using a configured LDAP server. If this succeeds, a cookie is returned to the user's browser, which is used to authenticate in subsequent requests. Forms authentication requires the web site to be accessed via HTTPS for all authenticated or login traffic, to protect the credentials and cookies. This is configured in the reverse proxy that handles the HTTPS protocol.

Header authentication relies on another system, such as SiteMinder, doing authentication before passing the request to the website. A special header is set by this up-stream system on each request that reaches the web site, indicating the authenticated user. The web site simply assumes that the given header is authoritative. This is a commonly used method in enterprise environments.

Either method can be used for the SmartSpace website, but the Rest API only supports Header authentication (or no authentication).

Configuration Files

Set up the configuration files for the SmartSpace website and REST API. On Linux these are placed in `/etc/ubisense`. The files should all be readable only by the user that runs the platform controller. The following configuration files are used:

web.json

This contains configuration specific to the website. In the following examples, we will set up the parameters to access the LDAP server used to validate the user's credentials. We also set a proxy base path matching the reverse proxy path we will configure in Apache2 for the website. The first example shows the configuration for an Active Directory server, whilst the second shows the configuration for an LDAP server that does not require a login for searching.

LDAP authentication with an Active Directory server

```
{
  "LDAPAuth": {
    "Server": "adserver.company.com",
    "Port": "389",
    "User": "",
```

```

    "Password": "",
    "SearchStart": "dc=company,dc=com",
    "AccountId": "sAMAccountName"
  },

  "ProxyOptions": {
    "Base": "/SmartSpace"
  }
}

```

LDAP authentication with no login for searching

```

{
  "LDAPAuth": {
    "Server": "ldap.company.com",
    "Port": "389",
    "User": "",
    "Password": "",
    "SearchStart": "ou=people,dc=company,dc=com",
    "AccountId": "uid",
    "ObjectClass": "account"
  },

  "ProxyOptions": {
    "Base": "/SmartSpace"
  }
}

```

Note: The example given above works with the default OpenLDAP schema: other servers and schema might require different parameters.

How the LDAP validator behaves

The LDAP validator does the following:

1. If User option set, bind using this user/password.
2. If SearchStart is set, use the SearchStart, AccountId and ObjectClass to search for the DN of the entered user name.
3. Bind using the DN, if the search succeeded, or the entered user name. Use the entered password. If this bind succeeds, the user is authenticated successfully.

The validator reports what it is doing on the website trace (always on). for example:

```

[Tue Sep 24 14:23:03 2019, 127.0.0.1:42943] website: LDAPValidator: Is user valid marcin
[Tue Sep 24 14:23:03 2019, 127.0.0.1:42943] website: LDAPValidator: searching (&
(objectclass=nsAccount)(uid=marcin)) at base ou=people,dc=ubisense,dc=aws
[Tue Sep 24 14:23:03 2019, 127.0.0.1:42943] website: LDAPValidator: binding as user
uid=marcin,ou=People,dc=ubisense,dc=aws

```

Installing SmartSpace Web on Linux

Enabling Secure LDAP (LDAPS)

To enable secure LDAP (LDAPS) for the connection you must use port 636. By using this port, SSL/TLS is enabled for the connection to the LDAP server (all other port numbers use TCP).

```
"LDAPAuth": {
  "Server": "adserver.company.com",
  "Port": "636",
  "User": "",
  "Password": "",
  "SearchStart": "dc=company,dc=com",
  "AccountId": "sAMAccountName"
},

"AuthOptions": {
  "UseCookiesOnWindows" : true,
  "ExpiryTimeSpan": "00:30",
  "SlidingExpiry": true
}
}
```

restapi.json

This contains configuration specific to the REST API. In this example, we will set up a proxy base path matching the reverse proxy path we will configure in Apache2 for the API:

```
{
  "ProxyOptions": {
    "Base": "/SmartSpaceApi"
  }
}
```

Here we are allowing anonymous access to the API. For header authentication see the [advanced configuration](#).

shared.json

shared.json is a configuration file that is loaded by both web sites, where options shared by the two can be set up. This is not used in our example configuration.

Deploy the Platform Services

The platform services should be deployed using the Ubisense Service Manager client or the **ubisense_installer** command-line tool.

To deploy the services using Ubisense Service Manager:

1. Run Service Manager 3 on a Windows client connected to the platform.
2. Select the INSTALL SERVICES task, click **Browse** and navigate to the extracted SmartSpace release, then go to folder **web\linux\packages**.
3. If you already have a .NET Core Runtime installed on the web server, unselect **Shared runtime** in the list of features to install.
4. Click **Install** and wait for the dialog to finish.
5. If you have multiple Linux controllers, deploy the website services onto the prepared Linux server:
 - a. Select the MANAGE SERVICES task.
 - b. Expand the **Controllers** entry under CELLS & CONTROLLERS, so you can see the web server controller.
 - c. Under SERVICES, find the "Ubisense/Visibility/Web site" service. Drag this service and drop it onto the web server controller. It should deploy onto that controller.
 - d. Repeat the above for the service "Ubisense/Application integration/RestAPI site".
6. The Web site and Rest API site services should now be running on the Linux web server, but will not be visible from the wider network.

To deploy the services using the **ubisense_installer** command-line tool:

1. Go to the **web\linux\packages** directory of your SmartSpace distribution directory.
2. Run the following commands to install and deploy the Web site and REST API site:

```
ubisense_installer -ud SmartSpaceWeb.xml
```

```
ubisense_installer -ud SmartSpaceRestApi.xml
```

3. If you do not have a .NET Core Runtime installed on the web server, you must also run the following command:

```
ubisense_installer -ud SharedRuntime.xml
```

Configure Apache2 Reverse Proxy

Now install and configure Apache2 as a reverse proxy. The instructions below are targeted at SLES, and will need to be adapted for other Linux distributions.

Install Apache2

Use the package management software for your Linux distribution to install Apache2. For example:

```
sudo zypper in apache2
```

You will also need to ensure all required Apache modules are enabled using the following command:

```
sudo a2enmod <module name>
```

The required modules include:

```
mod_proxy  
mod_proxy_http  
mod_ssl  
mod_headers  
mod_rewrite
```

On some variants of Linux, drop the "mod_" prefix when enabling a module for Apache. You can see the list of enabled modules with the command:

```
sudo apache2ctl -M
```

Modules may be displayed with slightly different names in the output generated by this command, with a **_module** suffix instead of a **mod_** prefix.

Enable Outbound Connections

For SELinux servers such as RHEL 7, you may find that the Apache service cannot connect to another website. To correct this you need to enable outbound connections by running the following command:

```
/usr/sbin/setsebool -P httpd_can_network_connect 1
```

Install the SSL certificates

Place the SSL certificate and key in a suitable location:

```
/etc/apache2/ssl.crt/localhost.crt  
/etc/apache2/ssl.key/localhost.key
```

Creating the service configuration file

Apache is configured by `.conf` files located in `/etc/apache2/vhosts.d/`.

Create a file `smartspace.conf`. The example below matches the proxy paths configured in the `web.json` and `restapi.json` example files above.

Installing SmartSpace Web on Linux

```
<VirtualHost *:*>
    RequestHeader set "X-Forwarded-Proto" expr=%{REQUEST_SCHEME}
</VirtualHost>

<VirtualHost *:80>
    # Rewrite http to https
    RewriteEngine On
    RewriteCond %{HTTPS} !=on
    RewriteRule ^/?(.*) https://%{SERVER_NAME}/$1 [R,L]
</VirtualHost>

<VirtualHost *:443>
    SSLProxyEngine on
    ProxyPreserveHost On

    # We proxy SmartSpaceApi to the REST api http port
    ProxyPass /SmartSpaceApi http://127.0.0.1:5002/SmartSpaceApi
    ProxyPassReverse /SmartSpaceApi http://127.0.0.1:5002/SmartSpaceApi

    # We proxy SmartSpace to the web site http port
    ProxyPass /SmartSpace http://127.0.0.1:5000/SmartSpace
    ProxyPassReverse /SmartSpace http://127.0.0.1:5000/SmartSpace

    # Add the forwarded protocol header
    RequestHeader set "X-Forwarded-Proto" expr=%{REQUEST_SCHEME}

    # Using localhost as server hostname
    ServerName mywebserverhost.domain.com
    ServerAlias mywebserverhost

    # Set logging_dir the a suitable logging directory
    ErrorLog /var/log/apache2/smartspace_error.log
    CustomLog /var/log/apache2/smartspace_custom.log common

    # Give away as little as possible on 404.
    ErrorDocument 404 "Not found"

    # Redirect top level to the SmartSpace web site
    RedirectMatch ^/$ /SmartSpace

    # Configure the https options to be suitably secure
    SSLEngine on
    SSLProtocol all -SSLv2
    SSLCipherSuite ALL:!ADH:!EXPORT:!SSLv2:!RC4+RSA:+HIGH:+MEDIUM:!LOW:!RC4
    SSLCertificateFile /etc/apache2/ssl.crt/localhost.crt
    SSLCertificateKeyFile /etc/apache2/ssl.key/localhost.key
</VirtualHost>
```

In this example, **SSLCertificateFile** should be the primary certificate file for the domain name. **SSLCertificateKeyFile** should be the key file generated when CSR is created. **SSLCertificateChainFile** should be the intermediate certificate file (if any) that was supplied by the certificate authority.

Enable SSL for Apache

Additionally SSL must be enabled for Apache by adding the **SSL** flag to **APACHE_SERVER_FLAGS** in **/etc/sysconfig/apache2**:

```
APACHE_SERVER_FLAGS="SSL"
```

You will need to restart Apache to reload any new or changed configuration files, using the following commands:

```
sudo systemctl restart apache2
sudo systemctl enable apache2
```

Check the status of Apache with the command:

```
sudo systemctl status apache2
```

Test the website

Visit the website in a browser. You should be redirected to the top level SmartSpace website page.

Advanced Configuration

Header Authentication (SiteMinder)

The websites can read the authenticated user from a header passed to them by a proxy server, such as SiteMinder. To configure this, in **shared.json**, **web.json** or **restapi.json**, set **AuthOptions/UserHeader** to be the name of the header from which the logged in user is to be extracted. If this option is configured, then the **LDAPAuth** options do not need to be set.

```
{
  "AuthOptions": {
    "UserHeader": "SITEMINDER_USER"
    "RequireAuth": true
  }
}
```

If **UserHeader** has been configured, it would be normal to also require authentication for all pages. This is what the **RequireAuth** configuration setting does. Since the **UserHeader** assumes that the header passed in the request has been checked, it is important that the user should not be able to bypass the proxy server and pass their own user header directly to the web sites.

Configuring the Authentication Timespan

The default authentication on Linux uses an expiry time of 30 minutes and a sliding timespan. This means that the authentication will expire 30 minutes after the user closes the website, but will continue to be refreshed while the user is still visiting the website.

You can disable this sliding expiry and set an absolute time after which login will need to be repeated. For example, to log out after three hours:

```
{
  "AuthOptions": {
    "ExpiryTimeSpan": "03:00",
    "SlidingExpiry": false
  }
}
```

Disable Hardened Headers

By default the website injects headers in each response for penetration security. These disable cross-site/cross-frame scripting, prevent content type sniffing, etc. If necessary, these headers can be disabled, and the reverse proxy configured manually to add appropriate headers instead.

```
{
  "SecurityOptions": {
    "HardenHeaders": false
  }
}
```

Enable Cross Origin Scripting

By default, no CORS headers are sent, so browsers will refuse to execute the API web methods from a page served from a different web server.

The option `AllowOrigins` in the `appsettings.json` file which overrides settings in `localsettings.json` enables cross origin scripting:

```
{
...
  "SecurityOptions": {
    "HardenHeaders": true,
    "AllowOrigins": [ "http://example.com", "https://*.mydomain.com" ]
  }
...
}
```

If AllowOrigins is set, and matches the origin of a request, the API will respond with suitable headers, for example:

```
Access-Control-Allow-Credentials: true
Access-Control-Allow-Headers: X-Requested-With
Access-Control-Allow-Methods: PUT
Access-Control-Allow-Origin: https://server.mydomain.com
Access-Control-Max-Age: 3600
```

The browser will now allow the request. Note that this allows the browser to cache the pre-flight OPTIONS responses for up to an hour, to reduce load on the API server. Thus changes to the allowed origins may not be picked up by browsers for an hour.

Removing the Shared Runtime after Undeploying the Websites

If you deployed the website and/or REST API without installing the .NET Core Runtime on the server, and subsequently move these website services to another controller, the Shared runtime will be left in the dataset. You can simply delete this directory when it is no longer needed by any locally deployed services. The folder is:

```
<dataset path>/Ubisense/Platform/Shared\ runtime/2.2.2/
```

Security Configuration for SmartSpace Web with Security Manager

If you are using a non-trivial security manager configuration to force authentication for services (as is the case for ACS installations) then you must you must run the **ubisense_cache_service_credentials** tool on the web server host. This is because the **credentials.dat** file created by the tool (in the latest version) allows IIS_IUSRS as a reader. Without this, the web site code cannot read the credentials, and therefore cannot connect to the platform services it needs.

Installing DIMENSION4

The DIMENSION4 software is supplied as a zipfile with the name DIMENSION4 followed by numbers indicating the version of the software, for example **DIMENSION4_3_3_669.zip**. Before you install DIMENSION4, you need to unzip this file into a *distribution directory* accessible to the machines on which you will be installing the software.

Installing DIMENSION4 Features

Follow these instructions to install and deploy DIMENSION4 features.



Before you can install and deploy features, you must install their licenses.

1. From an admin machine, run Service Manager 3.
2. Click on **INSTALL SERVICES**.
3. Specify the directory from which to install.

This is generally the **packages** folder in your DIMENSION4 distribution directory.

4. Select the features you want to install.

For DIMENSION4 select the single feature, DIMENSION4 location software.

5. Click **Install**.

6. When installation is complete, click **Close** to close the Installing Services dialog.

You have now installed your DIMENSION4 features. In Ubisense Service Manager you can see which services have been deployed by the installed features. Click on **MANAGE SERVICES** to display the status of installed services and manage their deployment.

Downloading DIMENSION4 programs to client machines (Windows)

Managing applications

To create shortcuts to DIMENSION4 applications:

1. Run the Ubisense Application Manager and click on **APPLICATIONS**.
2. Available applications are listed, with their version numbers and, where applicable, location on the Start menu.

Choose the applications you want to install.

- Double-click a single application
- Select several applications and press Enter

The following DIMENSION4 client program is available:

- Location System Config (the main DIMENSION4 configuration GUI)

3. Click **Create shortcuts for selected applications**.

Shortcuts are created in the Start menu in the locations indicated.

Managing tools and documents

To download DIMENSION4 command-line tools and documents to a selected directory:

1. Run the Ubisense Application Manager and click on **DOWNLOADABLES**.
Command-line tools and documents are listed in different categories.
2. Choose the tools or documents you want to download:
 - Double-click a single file name
 - Select several files and press Enter
3. Under Location system, additional DIMENSION4 command-line tools and documents are available.
 - Double-click a single file name
 - Select several files and press Enter
4. Specify the directory to install the files in and click **Start download**.

The files are downloaded to the specified directory.



Whenever you upgrade your DIMENSION4 installation, you must follow the process described above to replace your existing tools and documents with upgraded versions.

Downloading DIMENSION4 programs to client machines (Linux)

In order to avoid the use of incompatible versions of DIMENSION4 administrative and configuration tools, these tools are installed into the platform along with service upgrades. You can then download the current version of each tool onto your Linux client machine using the **ubisense_file_downloader**.

Run the tool with no arguments for help.

Installing DIMENSION4

For example, to download *all* Linux tools currently available to the current directory, run:

```
> ubisense_file_downloader download --linux-only .
```

To force the overwriting of existing downloads, add `--force`.

Installing the DIMENSION4 Series 7000 Coexistence Packages

The DIMENSION4 coexistence with Series 7000 software is supplied as a zipfile with the name D4_S7000_Coexistence followed by numbers indicating the version of the software, for example **D4_S7000_Coexistence_3_4_7147.zip**. Before you install DIMENSION4 coexistence with Series 7000, you need to unzip this file into a *distribution directory* accessible to the machines on which you will be installing the software.

Installing DIMENSION4 coexistence with Series 7000 Features

Follow these instructions to install and deploy DIMENSION4 coexistence with Series 7000 features.



Before you can install and deploy features, you must install their licenses.

1. From an admin machine, run Service Manager 3.
2. Click on **INSTALL SERVICES**.
3. Specify the directory from which to install.

This is generally the **packages** folder in your DIMENSION4 coexistence with Series 7000 distribution directory.

4. Select the features you want to install.

Select the DIMENSION4 coexistence with Series 7000 feature.

5. Click **Install**.
6. When installation is complete, click **Close** to close the Installing Services dialog.

You have now installed your DIMENSION4 coexistence with Series 7000 features. In Ubisense Service Manager you can see which services have been deployed by the installed features. Click on **MANAGE SERVICES** to display the status of installed services and manage their deployment.

Installing Series 7000

The Series 7000 software is supplied as a zipfile with the name Series7000 followed by numbers indicating the version of the software, for example **Series7000_2_1_11_7194.zip**. Before you install Series 7000, you need to unzip this file into a *distribution directory* accessible to the machines on which you will be installing the software.

Installing Series 7000 Features

Follow these instructions to install and deploy Series 7000 features.



Before you can install and deploy features, you must install their licenses.

1. From an admin machine, run Service Manager 3.
2. Click on **INSTALL SERVICES**.
3. Specify the directory from which to install.

This is generally the **packages** folder in your Series 7000 distribution directory.

For Series 7000 sensor bootfiles this is a directory with the same name as the identifying part of its parent directory. For example if you unzipped to a **Sensor_Bootfiles_standard_2_1_11_7222** directory, you install from the **standard** directory.

4. Select the features you want to install.

For Series 7000, select the Series 7000 RTLS feature

Also for Series 7000, go to the sensor bootfiles distribution and select **Everything (no feature dependencies)** to install the Sensor boot services.

5. Click **Install**.
6. When installation is complete, click **Close** to close the Installing Services dialog.

You have now installed your Series 7000 features. In Ubisense Service Manager you can see which services have been deployed by the installed features. Click on **MANAGE SERVICES** to display the status of installed services and manage their deployment.

Downloading Series 7000 programs to client machines (Windows)

Managing applications

To create shortcuts to Series 7000 applications:

1. Run the Ubisense Application Manager and click on **APPLICATIONS**.
2. Available applications are listed, with their version numbers and, where applicable, location on the Start menu.

Choose the applications you want to install.

- Double-click a single application
- Select several applications and press Enter

The following Series 7000 client program is available:

- Location Engine Configuration

3. Click **Create shortcuts for selected applications**.

Shortcuts are created in the Start menu in the locations indicated.

Managing tools and documents

To download Series 7000 command-line tools and documents to a selected directory:

1. Run the Ubisense Application Manager and click on **DOWNLOADABLES**.
Command-line tools and documents are listed in different categories.
2. Choose the tools or documents you want to download:
 - Double-click a single file name
 - Select several files and press Enter
3. Under **Ubisense Generation 2.X>Series 7000 RTLS>Administration tools and documentation**, the following command-line tools and documents are available.

Series 7000 tools

- ubisense_battery_monitor_config
- ubisense_le_ident
- ubisense_reboot_sensor
- ubisense_sensor_ip_configuration
- ubisense_tag_cleanup_config

Series 7000 documents

- MulticellOperation.pdf
- UbisenseTagCleanupService.pdf

4. Specify the directory to install the files in and click **Start download**.

The files are downloaded to the specified directory.



Whenever you upgrade your Series 7000 installation, you must follow the process described above to replace your existing tools and documents with upgraded versions.

Downloading Series 7000 programs to client machines (Linux)

In order to avoid the use of incompatible versions of Series 7000 administrative and configuration tools, these tools are installed into the platform along with service upgrades. You can then download the current version of each tool onto your Linux client machine using the **ubisense_file_downloader**.

Run the tool with no arguments for help.

For example, to download *all* Linux tools currently available to the current directory, run:

```
> ubisense_file_downloader download --linux-only .
```

To force the overwriting of existing downloads, add `--force`.

Installing ACS

The ACS software is supplied as a zipfile with the name ACS followed by numbers indicating the version of the software, for example **ACS-2.7.0.zip**. Before you install ACS, you need to unzip this file into a *distribution directory* accessible to the machines on which you will be installing the software.

Because ACS programs are distributed in the installable service packages, you are only strictly required to copy the release to the admin machine that you will use to install the packages.

Installing ACS Features

Follow these instructions to install and deploy ACS features.



Before you can install and deploy features, you must install their licenses.

1. From an admin machine, run Service Manager 3.
2. Click on **INSTALL SERVICES**.
3. Specify the directory from which to install.

This is generally the **packages** folder in your ACS distribution directory.

4. Select the features you want to install.

There are four features:

- ACS (*required*: installs ACS and legacy platform services)
- ACS Protocol (*optional*: installs a protocol service implementing the simple ACS protocol)
- ACS Support (*optional*: installs a service for transferring external object information between installations)
- Atlas Copco Open Protocol (*optional*: installs a protocol service implementing the Atlas Copco Open Protocol)

5. Click **Install**.

6. When installation is complete, click **Close** to close the Installing Services dialog.

You have now installed your ACS features. In Ubisense Service Manager you can see which services have been deployed by the installed features. Click on **MANAGE SERVICES** to display the status of installed services and manage their deployment.

Downloading ACS programs to client machines (Windows)

Managing applications

To create shortcuts to ACS applications:

1. Run the Ubisense Application Manager and click on **APPLICATIONS**.
2. Available applications are listed, with their version numbers and, where applicable, location on the Start menu.

Choose the applications you want to install.

- Double-click a single application
- Select several applications and press Enter

The following ACS client programs are available:

- ACS Main GUI (main ACS configuration GUI)
- Product Tag Association GUI (standalone GUI for associating Ubisense tags to products)
- Pulsed Line Product Feeder GUI (standalone GUI for feeding pulsed assembly lines with products)

3. Click **Create shortcuts for selected applications**.

Shortcuts are created in the Start menu in the locations indicated.

Managing tools and documents

To download ACS command-line tools and documents to a selected directory:

1. Run the Ubisense Application Manager and click on **DOWNLOADABLES**.
Command-line tools and documents are listed in different categories.
2. Choose the tools or documents you want to download:
 - Double-click a single file name
 - Select several files and press Enter
3. Under **Ubisense Generation 2.X>ACS>Tools**, the ACS command-line tools are available.

ACS tools

- `ubisense_acs_protocol_clientserver` (simulate a tool controller using the simple ACS protocol)

- `ubisense_create_config_translation_template` (write a template for configuration translations)
 - `ubisense_device_tag_simulator` (simulate tag location updates in assembly line stations)
 - `ubisense_export_area_data` (exports area data from a specified area)
 - `ubisense_export_walls` (exports walls data from a specified area)
 - `ubisense_import_area_data` (import area data in xbd format)
 - `ubisense_load_walls` (creates an area with walls loaded from a text file)
 - `ubisense_open_protocol_clientserver` (simulate a PF controller using the Atlas Copco Open Protocol)
 - `ubisense_product_data_dumper` (write current product instance data to a file)
 - `ubisense_product_data_loader` (load product instance data from a file)
 - `ubisense_product_instance_cleanup` (remove product instances that have no tag association)
 - `ubisense_product_tag_simulator` (simulate product tags moving along assembly lines)
 - `ubisense_text_translation_reader` (read .utf translation files and store them in the dataset)
 - `ubisense_toggle_v2_tag_rep` (switches the green dot tag representation in Ubisense 2.X programs on or off)
4. Under **Ubisense Generation 2.X>ACS > SmartSpace backwards compatibility with ACS > ACS SmartSpace tools**, the `ubisense_acs_smartspace_sync_admin` command-line tool is available. If you intend to synchronize ACS parameters with SmartSpace properties, download this tool. See xxx for information on syncing ACS and SmartSpace properties.
5. Specify the directory to install the files in and click **Start download**.
- The files are downloaded to the specified directory.



Whenever you upgrade your ACS installation, you must follow the process described above to replace your existing tools and documents with upgraded versions.

Adding Text Translations to the Dataset

ACS requires server side text translation to be loaded into the dataset. This step requires the `ubisense_text_tra` which you can download using the Ubisense Application Manager (in DOWNLOADABLES > Ubisense Generation 2.X > ACS > Tools). Ensure you have downloaded the tool and that it is on your path.

To load the text translations:

1. Open a Command Prompt window.
2. Change to the SmartSpace_3_4_7147 distribution directory (where you unzipped the ACS software).
3. Run the following command:

```
ubisense_text_translation_reader.exe translations
```

Customized Labels in the Product Tag Association Tool

You can configure the Product Tag Association GUI to display additional text for Product ID and Tag ID. You add the configurable text to the relevant text translation file(s), and then add the file(s) to the dataset by following the steps described above.

See *Example: Configuring Labels in the Product Tag Association GUI* in the ACS Help for an example.

Adding Audit Translations to the Dataset

ACS requires server side translation for the Audit UI to be loaded into the dataset. This step requires the `ubisense_translation_tool` which you can download using the Ubisense Application Manager (in DOWNLOADABLES > Ubisense > Platform > Translation tool). Ensure you have downloaded the tool and the DLLs that accompany it and that it is on your path.

1. Open a Command Prompt window.
2. Change to the ACS-2.8.0 distribution directory (where you unzipped the ACS software).
3. Run the following command:

```
ubisense_translation_tool import translations\for_ubisense_translation_
tool\acs_2_8_0_en_de.xliff
```

Running the ACS Client Software

To run the client software, use the Windows shortcuts you downloaded with the Ubisense Application Manager:

- Start > Ubisense 3 > ACS Main GUI
- Start > Ubisense 3 > Product Tag Association GUI
- Start > Ubisense 3 > Pulsed Line Product Feeder GUI
- Start > Ubisense 3 > SmartSpace Config

These shortcuts run the `UbisenseApplicationUpdater` program installed as part of Ubisense SmartSpace which will download and start the correct version of a selected program.

Settings in Ubisense Security Manager

If required, use Security Manager to restrict users from performing certain actions in clients such as ACS Main GUI.

Audit Messages for Automated Processes

Because ACS logs audit messages for various automated processes, a large number of audit messages can be generated. As a result, ACS can eventually become unusable and possibly fill the disk. To avoid this, you can set a configuration parameter—`audit_ignore_user_substring`—to prevent the generation of certain audit messages by one or more authenticated users.

By default, services that are authenticated with a user name containing the text string `[Automated]` do not produce audit messages. By specifying a different text string you can "ignore" audit messages from processes that are authenticated with user names containing that string of text.

Use the following command to exclude audit messages for a set of users:

```
ubisense_configuration_client set audit_ignore_user_substring <username_to_be_ignored>
```

where any user name that contains `<username_to_be_ignored>` will be ignored.

For example,

```
ubisense_configuration_client set audit_ignore_user_substring notaudited
```

would prevent the generation of audit messages by services authenticated by the *notaudited* user and any other user whose name contains the string *notaudited*.

Installing Site connector

The Site connector consists of a server application and a set of client applications. There are two Site connector clients: which one you install depends on the configuration of your installation.

Site connector requires both the Site connector server and at least one client to be installed. The steps you follow to install the server and the client software are described below. Additional configuration steps might be required.

For an overview of different uses for Site connector and detailed information on configuration, see the Ubisense Site Connector Guide on the Ubisense Documentation Portal.

The Site connector software is supplied as a zipfile with the name SiteConnector followed by numbers indicating the version of the software, for example **SiteConnector_2_1_11_7160.zip**. Before you install Site connector, you need to unzip this file into a *distribution directory* accessible to the machines on which you will be installing the software.

Installing Site connector server

The Site connector server is an independent service rather than a package deployed via the Ubisense platform. On Windows, this is installed as a Windows Service. On Linux, it should be started in the same way as core and controller, via a startup script or systemd, depending on the Linux distribution.

Installing Site connector server on Windows

1. Go to the **UbisenseSiteConnectorForServers** directory of your Site connector distribution directory.
2. Double-click the **UbisenseSiteConnectorForServers.msi** file and the Ubisense Site Connector Service Setup wizard appears.
3. Click **Next**.
4. Choose the Destination Folder for the software.
You can accept the default **C:\Program Files (x86)\Ubisense 2.1** or change to another destination.
5. Click **Next** and click **Install**.
6. When the installation is complete, click **Finish** to close the Ubisense Site Connector Service Setup wizard.

After installation is complete, start the service using Windows Services manager:

1. Open Services by typing **View local services** in the Start menu.
2. Start the service **UbisenseSiteConnectorServer 2.1**.

The service is configured to start automatically on reboot.

You can also stop and start the site connector service from the command prompt (as an administrator):

```
net stop "UbisenseSiteConnectorServer 2.1"  
net start "UbisenseSiteConnectorServer 2.1"
```

Installing Site connector server on Linux

For Linux, you can find the Site connector server executable in your distribution directory under **linux/server**. To install the executable:

1. Copy **ubisense_site_connector_server** onto your server
2. Create a startup script or systemd configuration to run the executable on startup.

Installing Site connector clients

Which client software you install depends on how you are using Site connector. See the Introduction to Site connector in the *Ubisense Site Connector Guide* available from the the Ubisense Documentation Portal for information on intended uses for Site connector and their configuration.

Installing the Site connector Client on Windows

1. Go to the **UbisenseSiteConnectorClient** directory of your Site connector distribution directory.
2. Double-click the **UbisenseSiteConnectorClient.msi** file and the Ubisense Site Connector Client Setup wizard appears.
3. Click **Next**.
4. Choose the Destination Folder for the software.
You can accept the default **C:\Program Files (x86)\Ubisense 2.1** or change to another destination.
5. Click **Next**.

Installing Site connector

6. Input the server IPAddress and site connector port number (these can be changed after installation). 49983 is the default port number which will be used in most installations. By default **Run in standalone mode** is selected. In standalone mode the client will only connect to the network of the Site Connector server it connects to. When not in standalone mode Site Connector will connect the networks of the client and server together. This should only be done if the effects are fully understood. After installation the standalone mode setting can only be changed with Platform Control (providing you have access to it).
7. Click **Next** and click **Install**.
8. When the installation is complete, click **Finish** to close the Ubisense Site Connector Client Setup wizard.

Installing the Site connector Client for Servers on Windows

1. Go to the **UbisenseSiteConnectorClientForServers** directory of your Site connector distribution directory.
2. Double-click the **UbisenseSiteConnectorClientForServers.msi** file and the Ubisense Site Connector Client for Servers Setup wizard appears.
3. Click **Next**.
4. Choose the Destination Folder for the software.
You can accept the default **C:\Program Files (x86)\Ubisense 2.1** or change to another destination.
5. Click **Next**.
6. Input the server IPAddress and site connector port number (these can be changed after installation). 49983 is the default port number which will be used in most installations. By default **Run in standalone mode** is selected. In standalone mode the client will only connect to the network of the Site Connector server it connects to. When not in standalone mode Site Connector will connect the networks of the client and server together. This should only be done if the effects are fully understood. After installation the standalone mode setting can only be changed with Platform Control (providing you have access to it).
7. Click **Next** and click **Install**.
8. When the installation is complete, click **Finish** to close the Ubisense Site Connector Client for Servers Setup wizard.

Installing the Site connector Client on Linux

There is no particular step to install the client. Launch the application **ubisense_site_connector_client**. To ensure that the daemon will restart in the event of a fatal failure, you can write a cron script such as this one:

```
#!/bin/bash
if [[ ! `pidof -s ubisense_site_connector_client ` ]]; then
    invoke-rc.d ubisense_site_connector_client start
fi
```

